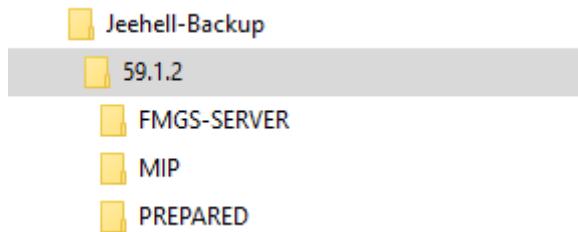


Jeehell Updater V1.0

Jeehell Updater simplifies the process of updating the software.

Before the update, a backup of the current installation is automatically created. This is done taking into account the version and computer name on which Jeehell is installed.

Therefore, a network drive can be used for the backup. A backup is automatically created for every computer on which Jeehell is installed.



After the backup has been created, the installation of the selected Jeehell setup file starts automatically.

The installation will now be carried out as usual. Based on the options specified in the settings for restoring folders and/or files, these will now be restored from the backup.

Starting with Jeehell Updater

Extract the .ZIP file on your Harddisk in any folder, then start „Jeehell Updater“

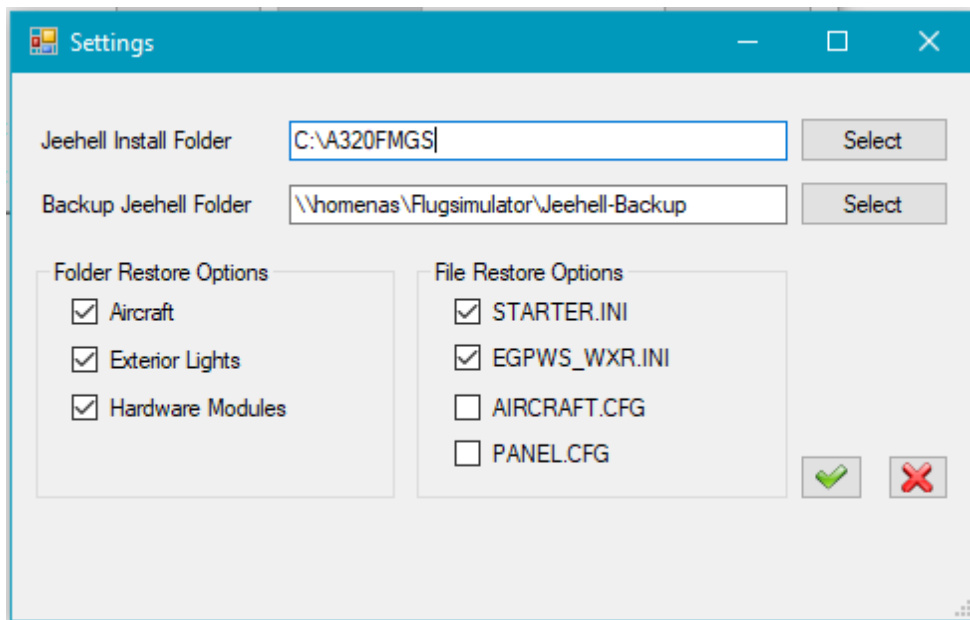
Do this on every machine where Jeehell is installed!

The first thing you need to do, is make the settings.

Click on the Settings button



The Setting Window will open.



Jeehell install Folder = Enter the folder where Jeehell is installed.

Backup Jeehell Folder = Folder where the Backups are created.

If you have more then one machine with Jeehell. You can use a Network Folder for Backups.

Folders for Version and machine names are created automatically.

Now activate all checkboxes for folders or files that should be restored automatically after the installation.

Notice

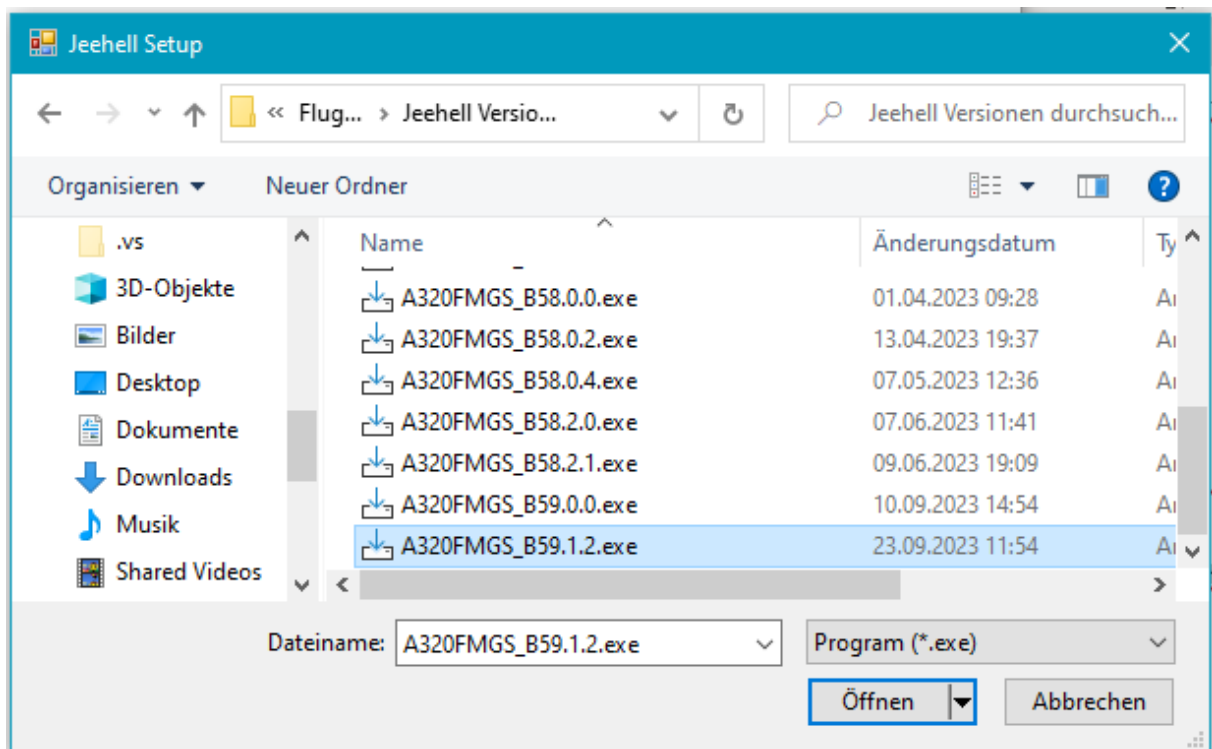
If you select the Aircraft folder on the left side, you cant activate Aircraft.cfg or Panel.cfg. Both are included in the Aircraft folder!

Save the Settings.

Click on the Button „Jeehell Setup“



In the next step you select the new Jeehell setup file.



Now the Button Update will come active.



Click on Update and wait.

The individual steps are displayed in the text box below

After that, the update is finished and your most important files or folders have been restored.

